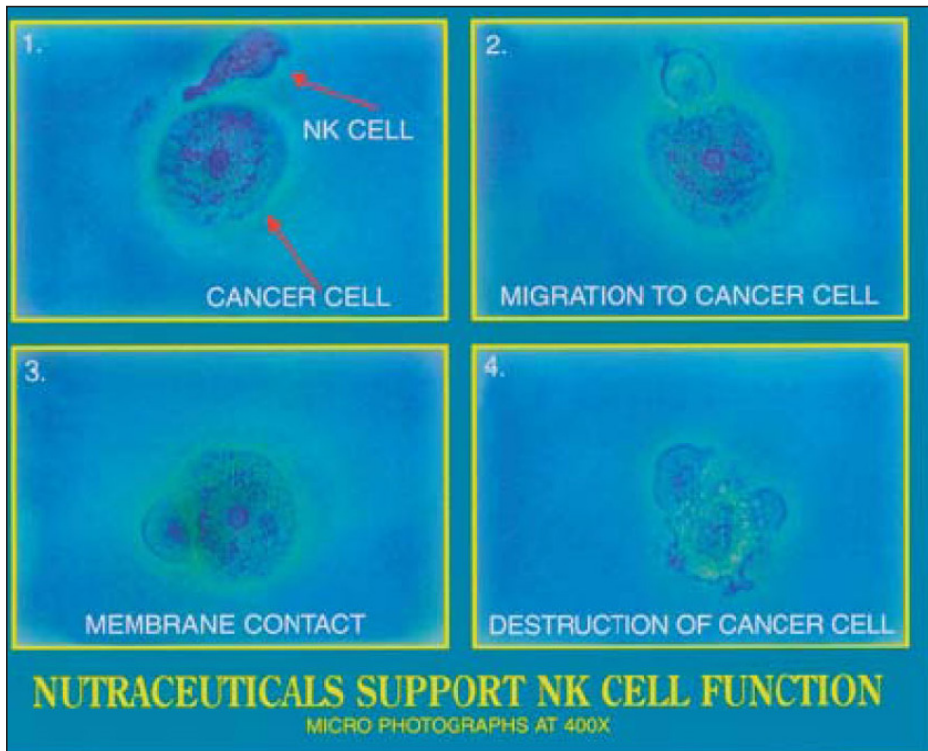


What is (PDS - 2865®) Natramune™

NEW, branded, clinically tested ingredient



Clinical evidence supports Natramune™ as an effective ingredient to stimulate and enhance the immune system's response by increasing Natural Killer (NK) cell activity.*

Innovation Laboratories, Inc's dedication to research.

This support continues aggressively with our newest research involving the areas contributing to:

- + Supports Natural Immune System
- + Learn the Secrets of a Healthy Immune System
- + Immune Ingredient Science
- + Ingredient that Takes a Distinctive Approach to Immune Health
- + Ingredient of Exceptional Quality and Bioavailability
- + Evidence-Research Based Ingredient you can trust
- + Ingredient that Put a Little Activity of Cells Into it
- + Ingredient that has Positive Impact on The Immune System

The all-natural, Natramune™ (PDS-2865®), modulates the body's immune system to strengthen resistance and maintain wellness.

Natramune™ (PDS-2865®) - is a natural obtained hemicellulose (polysaccharide complex with unique mixed-linkage of structure). Natramune™ also contains amino acids, oligosaccharides, glycoproteins, polyphenols and fatty acid mixture extracted from natural sources (Gramineae, Poaceae, Dioscoreaceae family of plants and/or several species of mushrooms).

Evidence supports its use as a functional ingredient for:

* Immune System Support, and Immunostimulator, boosting natural killer cell activity.

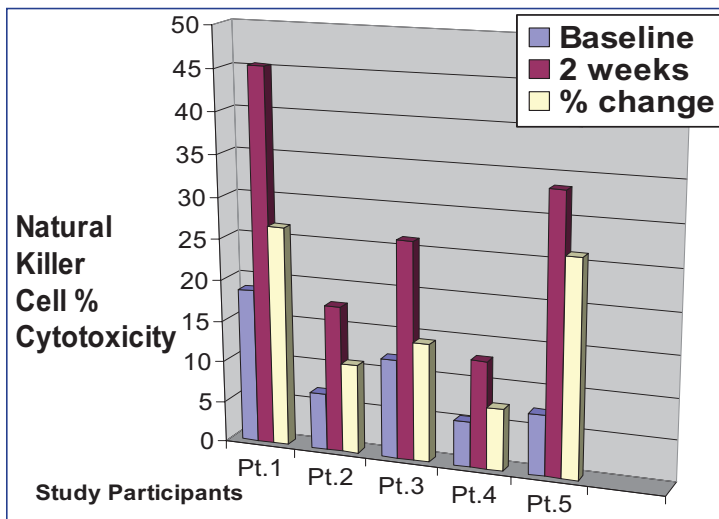
- Natramune™ (PDS-2865®) offers clinically proven immune enhancement, and immunity due to its ability to stimulate higher macrophage proliferation. Besides providing superior immune enhancing benefits*.
- Natramune™ (PDS-2865®) adds significant value to a proprietary formulation menu of scientifically supported products
- Natramune™ (PDS-2865®) products provide multifunctional benefits and properties either in stand-alone products or when combined with other ingredients to enhance product performance.
- NATRAMUNE™ (PDS-2865®) – is a potential Immunostimulator that increased natural killer cell activity*.
- **Actions:** May have immune-enhancing activity*
- **Indications and usage:** Natramune™ (PDS-2865®) exhibits immune-enhancing properties in vitro, animal models and human studies.
- **Dosage:** Dosage is variable and ranges from 1 to 3 grams daily and sometimes higher.

Nutritional benefits:

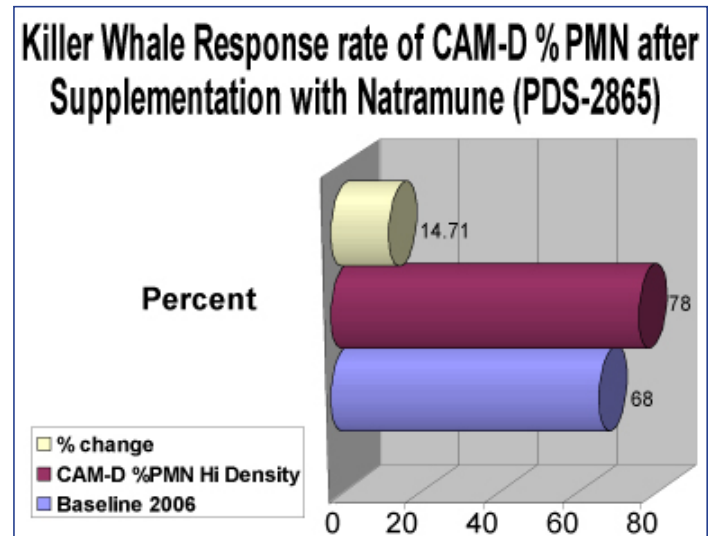
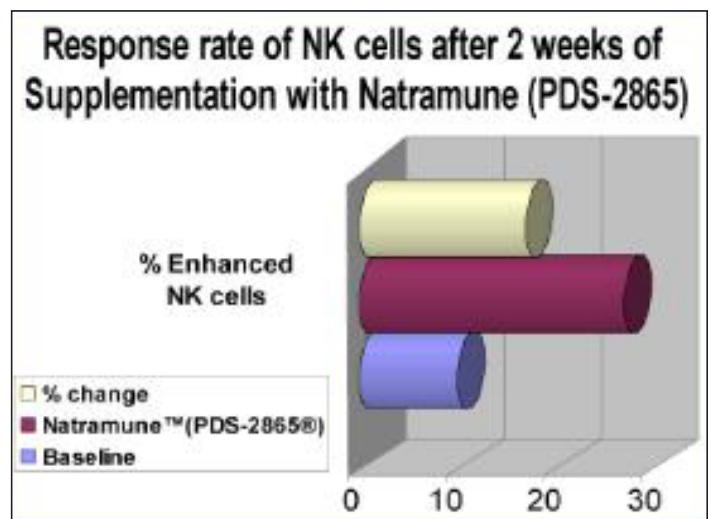
- * Helps maintain healthy gastrointestinal function
- * Enhances immune system response
- Enhanced the body's first line and second line of defense and other important functional components of the immune system*
- * Enhances immune system activity
- Enhanced the overall activity of the natural killer cells, T cells and B cells*
- * Increases immune cell cytokines
- Increased cell growth, promote cell activation, direct cellular traffic, and destroy target cells*
- * Has strong immune-stimulating properties with simultaneous anti-inflammatory properties

Research summary:

Natramune™ (PDS-2865®) has enhanced natural killer (NK) cell cytotoxicity and has also enhanced the function of some other immune-system components in experimental and clinical studies.



The bar graph analysis demonstrates the overall percent change of Natural Killer Cell Cytotoxicity (NKCC) after 2 weeks on Natramune™ (PDS-2865®) supplementation. The results demonstrate that NKCC increased in all 5 study participants. (Chavoustie et al. 2003. "Results". JANA. 6(2).



Researched effective:

- * See conducted clinical study on Natramune™ (PDS-2865®) at the Clinical Immunology-University of Miami School of Medicine; August 2002 to November 2002. Several of the participants were immunosuppressed either with Cancer, HIV or Hepatitis C. These patients reported improvements in areas such as general well-being, sleep, mental, physical condition and had no viral syndrome or illnesses during their supplement phase. This may be related to overall Natural Killer cell activity. Natural Killer cell activity may be a more sensitive marker than overall quantitative measurement.
- See publication in JANA (The Journal of the American Nutraceutical Association) (Pilot Study: Effect of PDS-2865 on Natural Killer Cell on Cytotoxicity). The article is available from the Vol.6, No.2 Spring 2003 edition of JANA.
- See conducted research study on Natramune™(PDS-2865®) at the Biological Sciences, Adelphi University; 2006-2007.
- See conducted clinical study on Natramune™ (PDS-2865®) at the Miami Seaquarium and University of California Veterinary Medicine Immunology Laboratory; 2006 to 2007. Oral administration of Natramune™ (PDS-2865®) to animals of the Cetacean Species: Effects on the Immune System.

Product Description:

Description: Beige to Light-brown colored powder

Natural Statement: Natramune™ (PDS-2865®) is an all natural valuable ingredient

Product Features: Beige to Light-brown free-flowing bulk powder

Other Product Benefits: Easy-to-formulate Clear consumer message

Applications: Appropriate for encapsulation and tableting, Appropriate for foods, nutraceutical and dietary supplements

Standard Packaging: Natramune™ (PDS-2865®) is available in 55 gallon drum (net weight 243 lb / 110 Kg)

Storage: Store unopened packages in cool and dry conditions

Let Natramune™ (PDS-2865®) add a natural message to your label

- 100% Natural Solution
all-natural fiber
GMO-free and allergen-free
- Easy to Use
is highly versatile to fit your formulation needs
- Effective in Wide Range of Products
Does not impart a flavor, color or odor to final food product
- A Source You Can Rely On
Steady raw ingredient supply assures you of timely product availability
Short-and long-term inventory planning to match our customers' development and production cycles